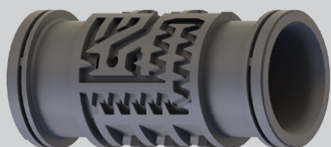


PC2 Drip Line

Drip Line



Ideal for: permanent horticulture with long-run lengths or sloping terrain

- Delivers uniform flow to crops across slopes and long-run lengths.
- Handles a wide range of pressure with an operation range of 0.5 – 3.5 bar (dependent on wall thickness).
- Cylindrical dripper for easy installation.

Product Information

Dripper Type	Cylindrical PC
Pressure Compensating	Yes
Flow Rates (lph)	16 mm: 1.4, 2.3, 3.9 20 mm: 1.5, 2.3, 3.9
Drip Line Diameter (mm)	16, 20
Drip Line Wall Thickness	16 mm: 35, 40, 45, 47 mil 20 mm: 35, 40, 45, 47 mil
Tube Color	Black, Brown
Outlet	Hole Standard 2 outlets



Performance Data & Maximum Run Length

Nominal Ø	Wall Thickness		Internal Ø	Maximum Operating Pressure	Roll Length	Flow Rates	Maximum Drip Line Length Calculated at Maximum Operating Pressure Slope: 0% Spacing Between Drippers (cm)										
							15	20	25	30	40	50	60	75	80	90	100
(mm)	(mm)	(mil)	(mm)	(bar)	(m)	(l/h)	(m)	(m)	(m)	(m)	(m)	(m)	(m)	(m)	(m)	(m)	(m)
16	0.89	35	13.7	3	400	1,40	79	103	125	147	188	227	263	315	331	363	393
						2,30	57	74	91	106	136	164	190	227	239	262	284
						3,90	40	52	64	75	96	117	135	162	170	186	202
	1.05	40	13.7	3.5	400	1,40	84	109	134	157	200	242	281	335	353	387	419
						2,30	61	79	96	113	145	175	203	243	255	280	303
						3,90	43	56	68	80	103	124	144	173	182	199	216
	1.15/1.20	45/47	13.7	3.5	400	1,40	84	109	134	157	200	242	281	335	353	387	419
						2,30	61	79	96	113	145	175	203	243	255	280	303
						3,90	43	56	68	80	103	124	144	173	182	199	216
20	0.89	35	17.5	3	300	1,50	116	151	184	216	276	333	386	461	485	531	575
						2,30	88	114	139	163	209	252	292	350	368	403	437
						3,90	62	80	98	116	148	179	207	248	261	285	310
	1.02	40	17.5	3.5	300	1,50	124	160	196	230	294	355	412	491	517	566	614
						2,30	93	121	148	174	222	268	311	373	392	429	466
						3,90	66	85	105	123	158	190	221	264	278	304	330
	1.15/1.20	45/47	17.5	3.5	300	1,50	124	160	196	230	294	355	412	491	517	566	614
						2,30	93	121	148	174	222	268	311	373	392	429	466
						3,90	66	85	105	123	158	190	221	264	278	304	330

*Short coils of 25, 50 and 100m also available.

"I'm growing cotton and corn in Larissa region in Greece for many years now, and since 2004 I'm irrigating my fields with pressure compensating drip line Eurodrip PC2."

I would never consider to replace this drip line with anything else, since it provides uniform water distribution even on sloping terrain and long-run lengths. It's very resistant to clogging and requires very low effort during installation and retrieval from the field.

I have nothing to worry about knowing that my crops are irrigated by Eurodrip PC2".



**Antonis
Koutsaftoulis, Greece**

Case study outcomes are for information purposes only and actual results may vary. This literature has been compiled for worldwide circulation and the descriptions, photos, and information are for general purpose use only. Please consult with an irrigation specialist and technical specifications for proper use of Rivulis products. Because some products are not available in all regions, please contact your local dealer for details. Rivulis reserves the right to change specifications and the design of all products without notice. Every effort has been used to ensure that product information, including data sheets, schematics, manuals and brochures are correct. However information should be verified before making any decisions based on this information.